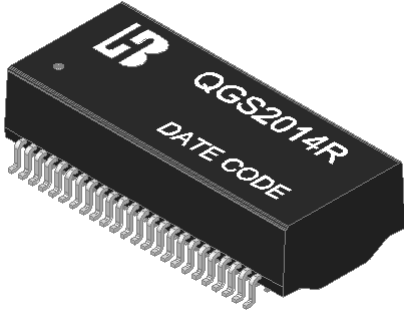


**Feature**



- Design for 2.5G/5G ethernet application.
- Unsupported POE application.
- Complying with ROHS & Halogen Free requirements.
- Operating temperature range: 0°C to +70°C.
- Storage temperature range: -25°C to +85°C.

**Electrical Specifications @ 25°C**

Part Number	Turns Ratio (±5%)		OCL (uH Min) @100KHz/0.1V	L.L (uH Max)	C <sub>ww</sub> (pF Max)	DCR (Ω Max)	HI-POT
	TX	RX					
QGS2014R	1CT:1CT	1CT:1CT	180	0.5	2.8	1.0	AC1500V/1mA

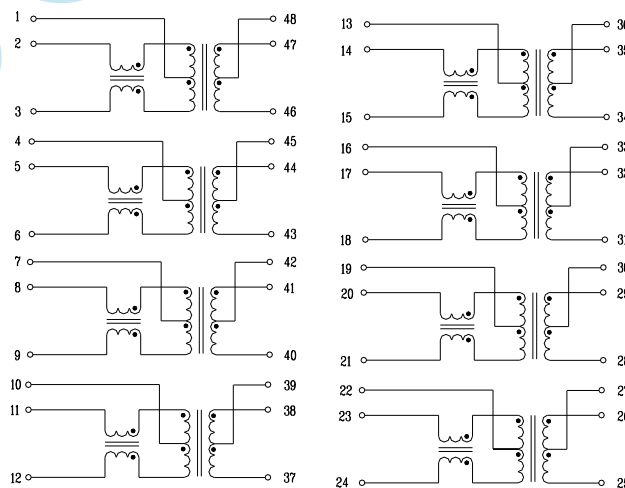
**Continue**

Part Number	Insertion Loss (dB Max)		Return Loss (dB Min) @ Load 100Ω	
	1 ≦ f ≦ 100 MHz	100 < f ≦ 250 MHz	1 ≦ f ≦ 40 MHz	40 < f ≦ 250 MHz
QGS2014R	-1.0	-2.0	-16	-(16-10log <sub>10</sub> (f/40))

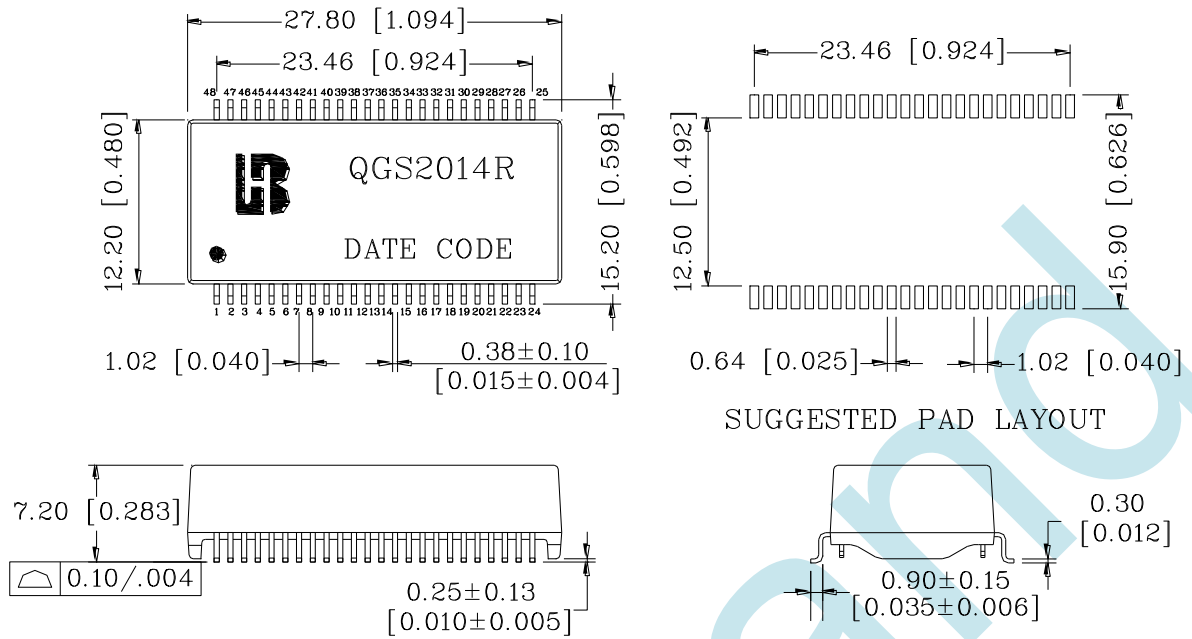
**Continue**

Part Number	Cross talk (dB Min)		DCMR (dB Min)		
	1 ≦ f ≦ 100 MHz	100 < f ≦ 250MHz	1 < f ≦ 30 MHz	30 < f ≦ 250 MHz	
QGS2014R	$20 \log_{10} \left[ 10^{\frac{35.3 - 15 \log_{10}(f/100)}{-20}} + 2 \times 10^{\frac{43 - 20 \log_{10}(f/100)}{-20}} \right]$		-30	-48	-(44-19.2 log <sub>10</sub> (f/50))

**Schematic**



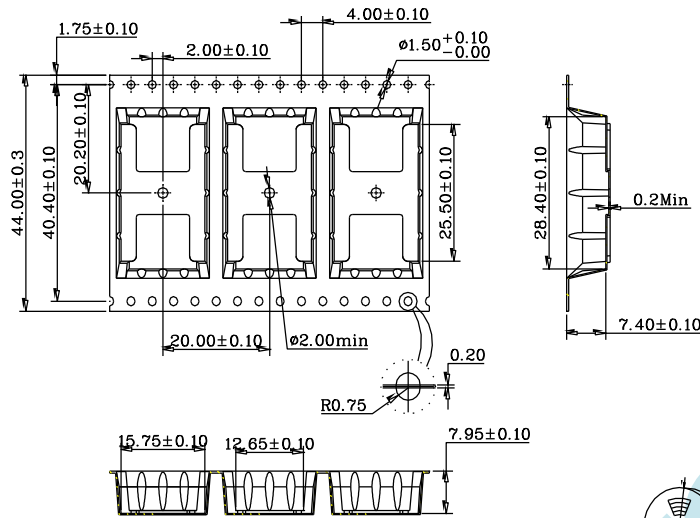
**Mechanical**



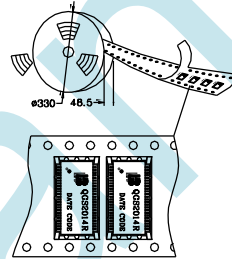
Units: mm[Inches] Tolerance: xx.xx±0.25[0.010]  
 0.xx±0.05[0.002]

Bothhand

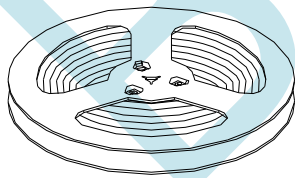
**REEL PACKAGE**



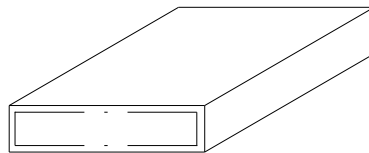
1. 10 sprocket hole pitch cumulative tolerance  $\pm 0.20$
2. Carrier camber is within 1 mm in 250mm
3. Material :Black Anti-Static polystyrene.
4. All dimensions meet EIA-481-B requirements
5. Thickness :0.40±0.05mm
6. Component load per 13" reel :350pcs
7. Packing length per 22" reel: 25.1 Meters
8. comply with Bothhand's <BHKP-WI-44-005> requirements



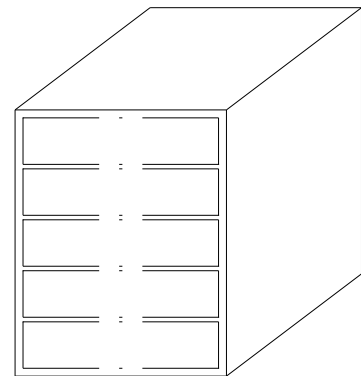
**CARTON PACKAGE**



REEL



INNER BOX: 347x347x82



OUTER CARTON: 375x375x470

1. 1 Reel=350PCS
2. 1 INNER BOX=1 Reel=350 PCS
3. 1 OUTER CARTON=5 INNER BOX=5\*350=1750 PCS